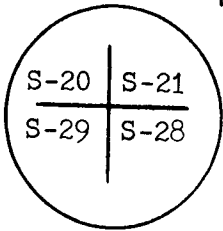


'89 MAY 8 PM 4 37

CERTIFIED LAND CORNER RECORDATION

DESCRIPTION OF CORNER EVIDENCE FOUND, AND ORIGINAL RECORD (if known)



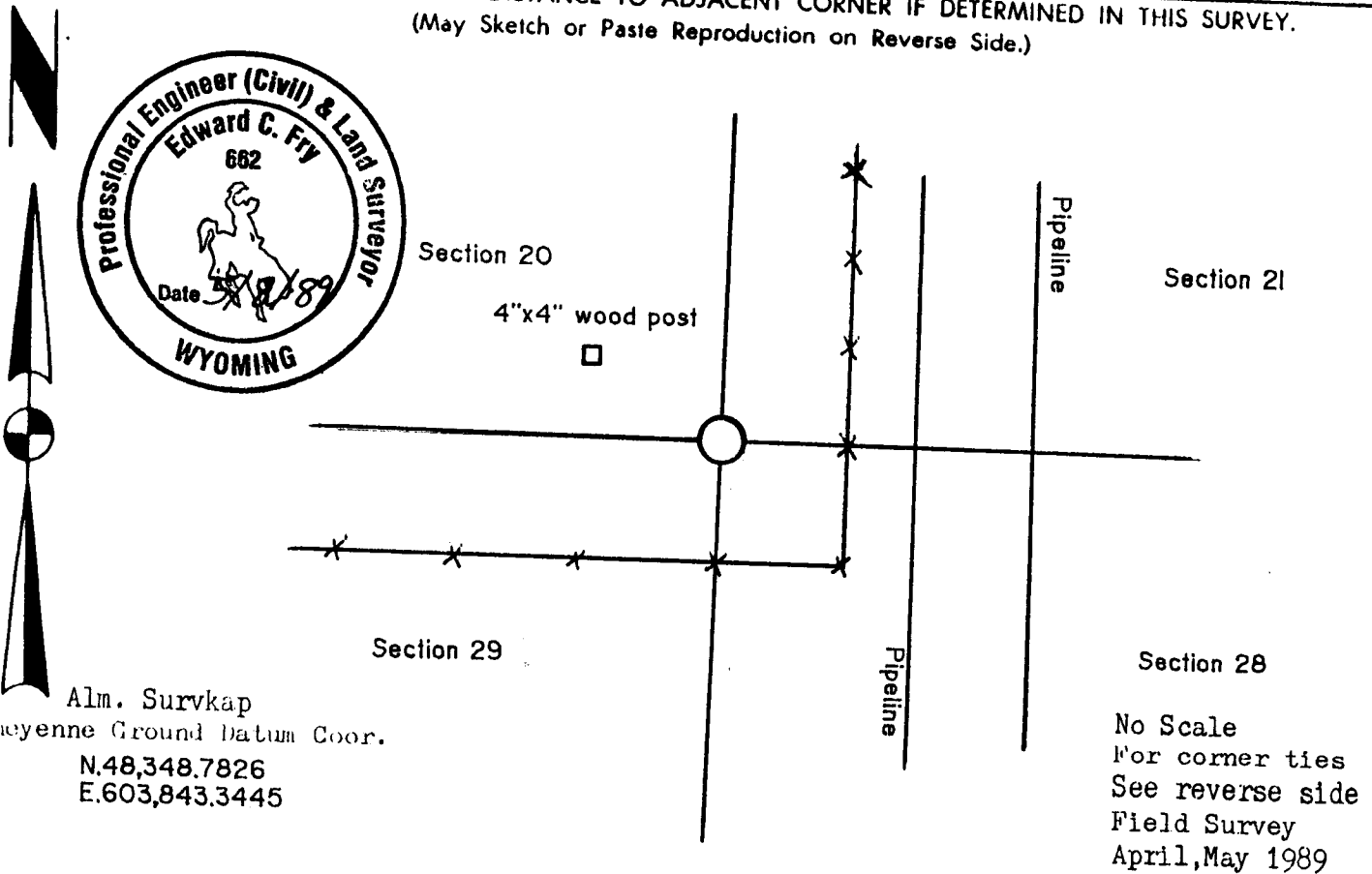
Found a one and one half inch brass cap with section numbers stamped on it set by L.S. 519. The G.L.O. monument is described as a granite stone 20"x10"x7" set in the year 1870.

T 13 N R 66 W

DESCRIPTION OF MONUMENT AND ACCESSORIES ESTABLISHED TO PERPETUATE THE ORIGINAL LOCATION OF THIS CORNER:

See monument record filed by R.L. Hudson.
See below for details.

SKETCH, WITH COURSE AND DISTANCE TO ADJACENT CORNER IF DETERMINED IN THIS SURVEY.
(May Sketch or Paste Reproduction on Reverse Side.)



Alm. Survkap
Cheyenne Ground Datum Coor.
N.48,348.7826
E.603,843.3445

I, Edward C. Fry certify that I have carefully ~~performed~~ reviewed the work done on the diagrammed corner as reported on this recordation form and approve the same.

Edward C. Fry
Signature of Surveyor

P.E./L.S. #662

Registration No.

STATE OF WYOMING,
Office of Clerk and Recorder,
County of _____

This "corner record" was filed for record on the _____ day of _____, 19____, was noted on the cross-index plat and is assigned page No. _____, in book No. _____.

County Official			
Cross Index No. <u>R-9</u>	T. <u>13</u>	R. <u>66</u>	Mer.
_____	T. _____	R. _____	Mer.
_____	T. _____	R. _____	Mer.
_____	T. _____	R. _____	Mer.
_____	T. _____	R. _____	Mer.
_____	T. _____	R. _____	Mer.
_____	T. _____	R. _____	Mer.

